

## P261 Rafter Gasket Glazing System

Reference Code: P261

Colours & Lengths available:

Finish	2.5m	3m	3.5m	4m
Mill	N/A	√	N/A	√
White	√	√	√	√
Brown	N/A	√	N/A	√

### Description:

An aluminium capped rafter gasket glazing system for installing multiwall polycarbonate up to 25mm thickness.

The P261 system is designed to be fitted onto 60mm wide rafters. It consists of a 60mm wide rafter gasket, an aluminium cap fitted with gaskets and a push fit end plate.

The rafter gasket is nailed to the rafter using galvanised nails at 300mm intervals, the glazing sheet sits on the rafter gasket and the cap is drilled at intervals no more than 350mm apart. 65mm stainless steel wood screws are then fitted through the cap into the rafter. A plastic screw cover cap should be fitted to cover and protect the head of the screw.

The P261 system is supplied as a pre-pack in 3 metre and 4 metre lengths. Mill finish as well as polyester powder coated white (RAL9910 satin) and brown (RAL8040 satin) are available as standard. We can also supply the aluminium cap painted to a specific RAL colour although this may be subject to a minimum quantity requirement and surcharge.

### Hip System

Reference: P261H  
 Colour: Mill Finish, White or Brown  
 Length: 3m and 4m

To make the bar suitable for a hipped application, the glazing bar cap is changed for a wider more angled version, referenced as P261H. The P261H system is supplied as a pre-pack in 3m and 4m lengths. Each pack consists of 60mm wide rafter gasket, an aluminium glazing bar cap with bubble gasket pressed into place along length of the cap and a wide push fit plastic end plate. (Please note: this is not suitable as a ridge bar.)

### Applications:

- Rafter assembly roofing
- Canopies
- Lean-to sunrooms
- Conservatories
- Car ports
- Porches

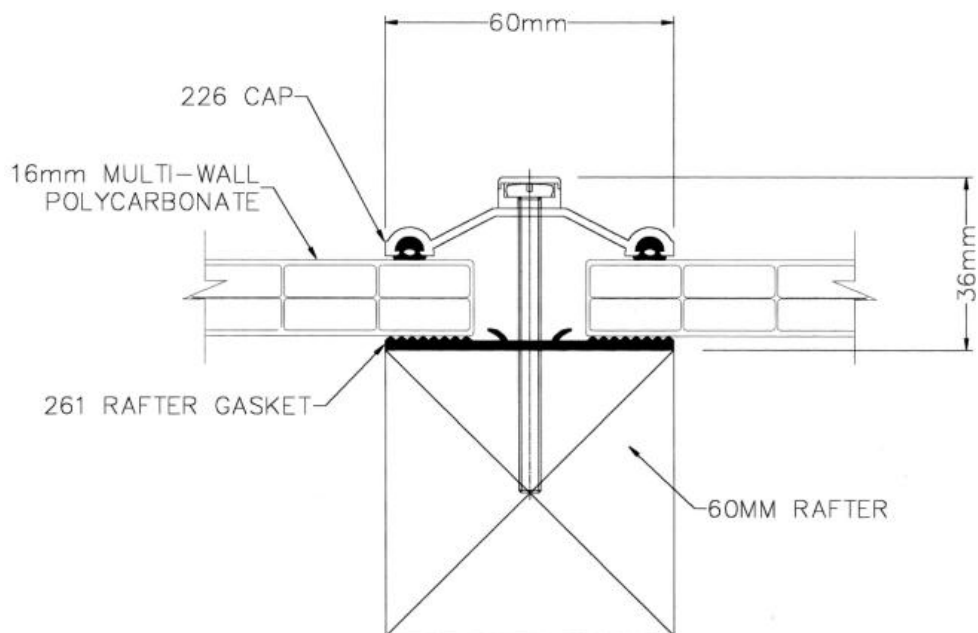
**NOTE:** The maximum recommended glazing centres for multiwall polycarbonate are:

10mm sheet	=	700 mm
16mm sheet	=	1,000mm
25mm sheet	=	1,250mm

### Glazing with Glass

The P261 system is suitable for use with glass up to 24mm thickness. However, we cannot give advice on the width of rafters required or at what centres they should be placed but we do recommend that a mechanically fixed end plate similar to our RGMEP end plate be fitted at the foot of each bar.

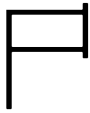







226/261 RAFTER GASKET

- Rafter width:** Minimum 60mm
- Pack lengths available:** 3 metres, 4 metres
- Pack contents:** 261 rafter gasket  
226 aluminium cap with gaskets fitted  
226EP polycarbonate stop end plate
- Colours available:** Mill, or powder coated white or brown  
RAL or BS colours to special order

**Complementary Fixing Accessories for use with the P261 rafter gasket glazing system:**

<p><b>Side Trim</b></p>  <p>10mm: Ref 272 16mm: Ref 273 25mm: Ref 275</p>	<p><b>U Profile</b></p>  <p>10mm: Ref 252 16mm: Ref 253 25mm: Ref 255</p>
<p><b>F Profile</b></p>  <p>10mm: Ref 222 16mm: Ref 223 25mm: Ref 225</p>	<p><b>Fixing Buttons</b></p>  <p>10mm White: Ref 244P    10mm Brown: Ref 247P 16mm White: Ref 245P    16mm Brown: Ref 248P 25mm White: Ref 249P    25mm Brown: Ref 250P</p>
<p><b>Anti-dust/Breather Tape</b> Ref FT10R / FT16R / FT25R Ref PBT10R / PBT16R / PBT25R</p>	<p><b>Butyl Flashing</b> 200/20 White 200/20 Lead</p>

Please note that all information, advice or recommendation is given in good faith and to the best of our knowledge. Due to a policy of continuous improvement we reserve the right to change specifications without prior notice.